

*Timberwise*

Quality wooden floors from Finland.



*Karlian*

AN UNDERCOVERED WORLD OF LUXURY

[www.karlianintl.com](http://www.karlianintl.com)

Karlian International Ltd.

# FINNISH TIMBERWISE

*Timberwise is a family-owned company established in 1999 in Loimaa, Finland. We produce wooden floors for people who value natural, safe and high-quality Finnish work. Our products are created by combining the best raw material in the world with Finnish carpentry and highly automated manufacturing methods.*







Timberwise Oy  
 P.O.Box 99  
 Juvantie 222  
 32200 Loimaa, Finland

Tel: +358 (0)2 763 6420  
 Fax: +358 (0)2 762 7465

[www.timberwise.fi](http://www.timberwise.fi)  
[info@timberwise.fi](mailto:info@timberwise.fi)

The requirements of the target are to be taken into account when selecting the product. If not sure about the suitability of a product for a certain use, you must ask the retailer or manufacturer for additional details. Due to the diverse characteristics of wood as raw material, the content of this brochure is not legally binding, and no warranty or liability claims can be made based on the material in the brochure. The images are photographic copies, therefore the coloring of the objects is only suggestive. The color and shade of the material to be delivered may in reality differ from the colors and shades of the objects in the brochure. We reserve the right to make changes.

Newprint Oy, 8/2013

**NO ADDED  
 FORMALDEHYDE**



**JAS F\*\*\*\*\***



Timberwise is grateful for the support of the following companies; Artek 2nd Cycle, Asko, Formverk, Interiors, Kasper Nyman Design, Momono, Pino, Skanno, Tikau, Tingeling, Valanti, Wanhakartano Antiques







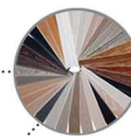
Oak Vintage  
 PYHÄ sanded, hard wax oiled

# GOOD REASONS TO CHOOSE TIMBERWISE

Timberwise is the world's best parquet. It is manufactured from the highest quality raw materials in Loimaa, Finland. The result is a unique combination of Finnish expertise, style and safety. Quality that can be felt at every step - from one generation to the next.

## THE BEST WOOD

Our wooden floors are produced from high-quality European oak, Ash and Austrian Larch.



## AMAZING APPEARANCE

Timberwise selection is not only the most diverse, but also the most impressive.

## MADE IN FINLAND

We are a Finnish family-owned company whose products are manufactured in Loimaa in Southwest Finland.

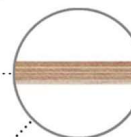


## SAFE

No added formaldehyde - no harmful emissions to room air. Certified by Finnish Allergy and Asthma foundation (Only wooden flooring producer nominated with Allergy Label).

## ECOLOGICAL AND ETHICAL

Our raw material is sourced from Europe in compliance with ethical values and always from PEFC certified forests.

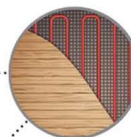


## STABLE STRUCTURE

Our unique birch plywood 3-layer structure guarantees a floor which is significantly sturdier, more even and durable.

## LASTS AND LASTS

Our glued joints are designed to endure even the most extreme climatic environment at Hong Kong.

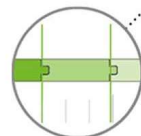


## SUITABLE FOR UNDERFLOOR HEATING

Our wooden floors can safely be installed on an underfloor heating system.

## EASY TO INSTALL

Tough coating surface options of extreme Matt UV Varnishes and Osmo UV wax oil providing strong & easy clean surface.



## FORMALDEHYDE EMISSION TEST

Fulfilling the highest formaldehyde emission standard the market.







## For Clean Indoor Air

Formaldehyde is one of the chemicals that impair indoor air quality. The main source of formaldehyde has been chipboard, but also laminates, parquets and panels may emit formaldehyde if formaldehyde-containing adhesive has been used to glue them. Formaldehyde may irritate the eyes and upper respiratory passage even in small quantities, and it has been suspected to be connected with asthma symptoms. These matters are noteworthy especially in families with children, as small children crawl and play on the floor.

The floor is one of the largest surfaces in the home, and therefore Timberwise has set product safety as one of its most important quality criteria. We are the first parquet factory in the world to introduce a completely formaldehyde-free adhesive in the production of all our products.

Safe and emission-free products increase domestic comfort, guarantee better breathing air in your home, and reduce the risk of allergy and asthma. Timberwise is the first, and so far the only, wooden flooring manufacturer to have been granted the Allergy Label of Finland's Allergy and Asthma Federation.

Ecology is the result of practical actions.



Timberwise is now the first wood floor manufacturer in the world to offer antibacterial.



The image features a close-up, top-down view of a light-colored wooden floor with a herringbone pattern. The planks are arranged in a complex, interlocking geometric pattern. In the upper right corner, there is a small, round, light-colored ceramic object, possibly a candle or a decorative piece, resting on a piece of light-colored, frayed fabric. Next to it is a white rectangular object, possibly a book or a folder, with some faint text on it. The overall aesthetic is clean, modern, and natural.

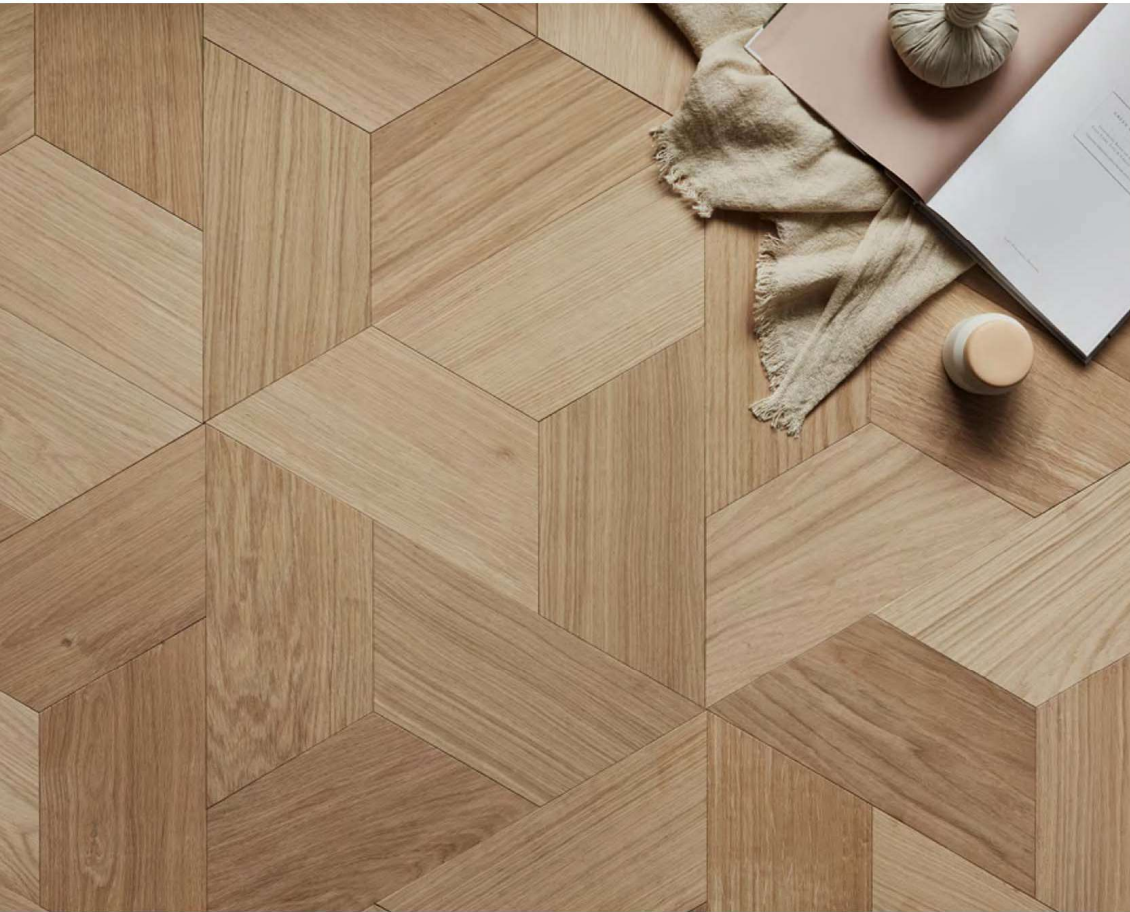
*Timberwise*  
FLOOR FOR LIFE

## DESIGN FLOOR

ALL TIMBERWISE DESIGN FLOORS ARE INSTALLED  
GLUEING DOWN TO SUBFLOOR

[WWW.TIMBERWISE.FI](http://WWW.TIMBERWISE.FI)



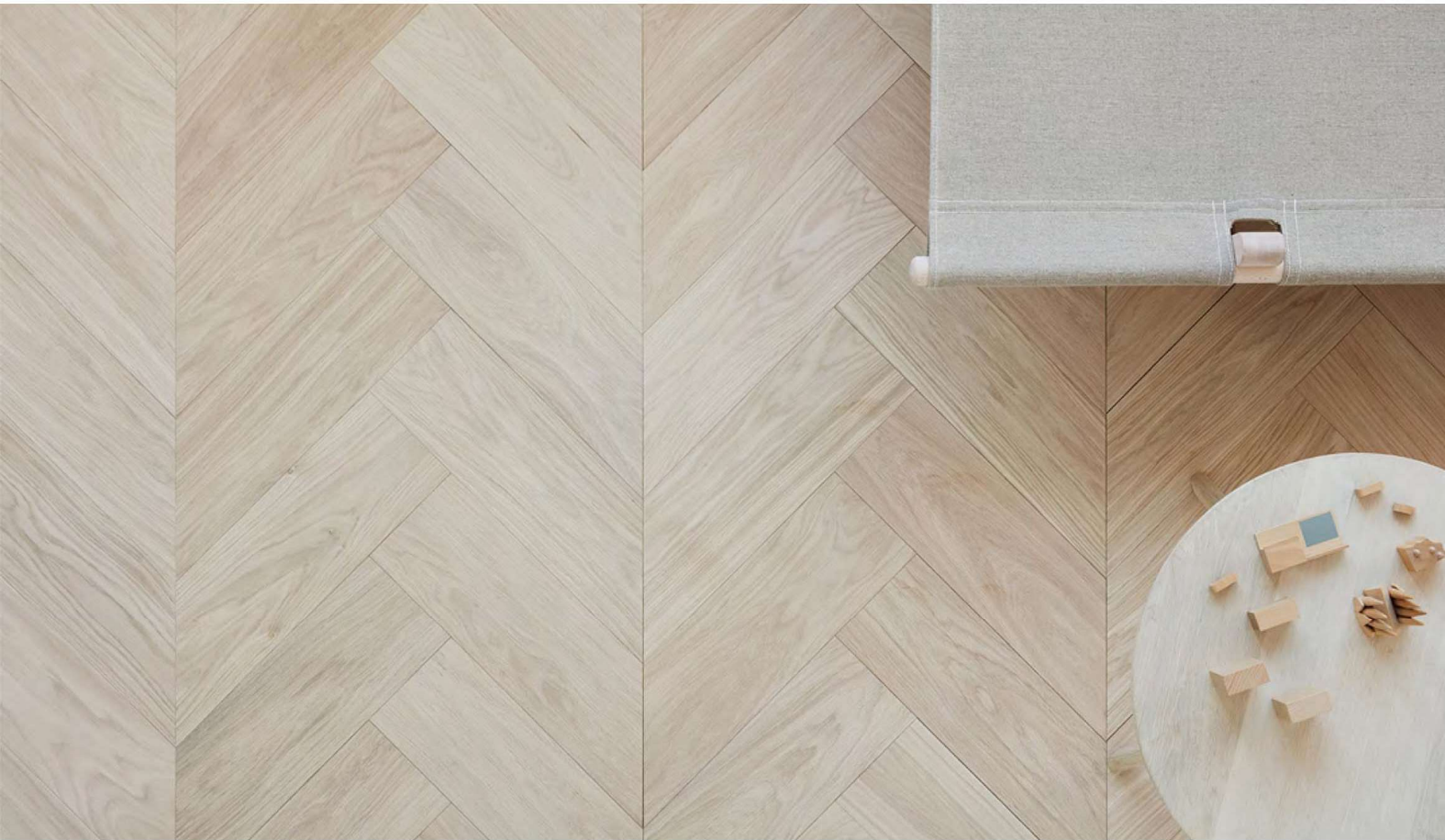


DESIGN FLOOR **KOLMIO**

**Measures**

thickness: 14,5 mm

width: 150 mm



**DESIGN FLOOR VIISTO -  
CHEVBONE PATTERN**

**Measures**

thickness: 14,5 mm

width: 150 mm

length: 500 mm



# WOOD SPECIES AND GRADES



## OAK

*Quercus robur*

- Hard and wear-resistant wood species
- PEFC-certified European white oak
- Brinell hardness 2.9–4.1 HB



### OAK SELECT

The Select grade is carefully selected, evenly coloured and almost knotless. The grade allows the filling of pin knots, the natural reflective pattern of oak – the pattern created by the medullary rays of the tree, and the colour variation caused by the grain pattern.



### OAK CLASSIC

Classic is a natural-looking grade, with the natural grain pattern and colour variation of the wood clearly visible. The natural knottness of the wood, with a limited size and number of knots, is allowed within the Classic grade. The Classic grade also allows small knot groups, the so-called cat paws, as well as the filling of knots.



### OAK RUSTIC

True to its name, Rustic is a knotty grade. The Rustic grade is characterised by strong colour variations and an unlimited number of both small and large knots. Small depressions in knot fillings are allowed.



### OAK VINTAGE

The Oak Vintage grade is similar to the Rustic grade, except that it also allows large filled knots and cracks. An old and authentic-looking grade with several different tones available.



DESIGN FLOOR **KOLMIO -  
HEXAGON PATTERNS**

**Measures**

thickness: 14,5 mm

width: 150 mm





## DESIGN FLOOR **PALA**

### Measures

thickness: 14,5 mm

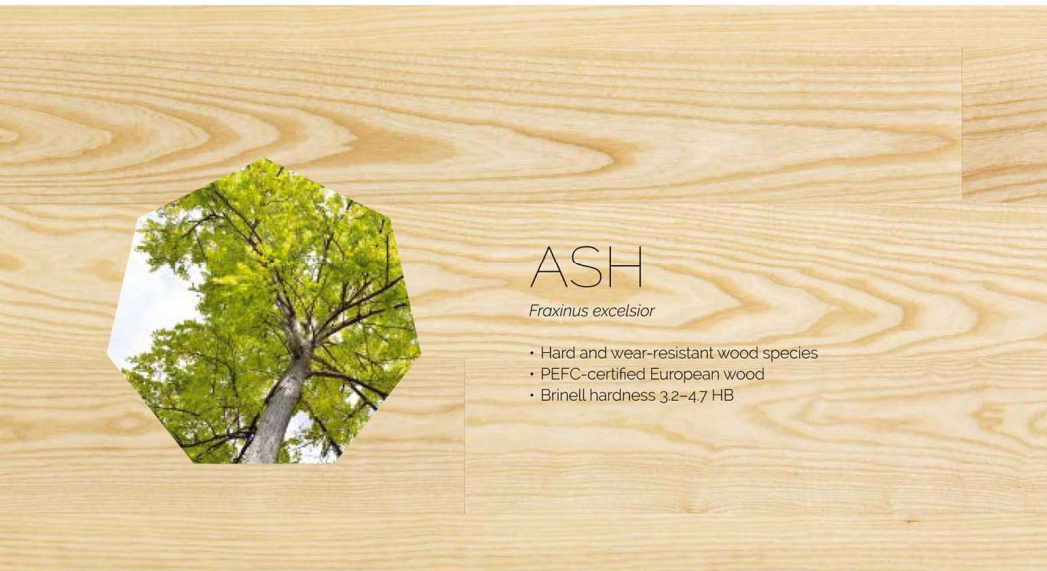
width: 150 mm

length: 150 / 300 / 450 mm

DESIGN FLOOR PALA PATTERN EXAMPLES







## ASH

*Fraxinus excelsior*

- Hard and wear-resistant wood species
- PEFC-certified European wood
- Brinell hardness 3.2–4.7 HB



## LARCH

*Larix decidua and Larix sibirica*

- Strong colour variation and knottiness
- PEFC-certified larch
- Brinell hardness 2.2–3.0 HB



### ASH SELECT

The Select grade is carefully selected, subdued and almost knotless with an evenly coloured general tone. For this harmonic grade, the natural colour variation caused by the grain pattern, as well as healthy light pin knots are allowed.



### ASH CLASSIC

Classic is a natural-looking grade with clearly visible natural grain pattern, colour variation and small dark knots. The general tone of Classic is slightly darker than in Select. Within the Classic grade, filling of knots is allowed.



### ASH OLIVE

The Olive grade has been named after the dark heartwood, also known as 'olive'. The variation in appearance between different boards may be significant, and some of the boards may be without the dark heartwood. Knots, knot groups and filling of knots are also allowed for this grade.



### LARCH: GRADES

Larch is manufactured in a single standard grade which allows the natural grain pattern of the wood, colour variation and, in addition to natural knots, also round and filled knots, knot cracks and pitch pockets.

### NOTE!

Larch is characterised by its knottiness and significant colour variations. The colour of larch naturally varies from a light yellowish to a reddish colour.



## DESIGN FLOOR **CHEVRON**

### Measures

thickness: 14,5 mm

Width x Length:

80 x 515/670 mm

150 x 825 mm

110 x 520 mm

110 x 660 mm

Wood species: Oak, Ash, Larch





## DESIGN FLOOR HERRINGBONE

### Measures

thickness: 14,5 mm

width x length:

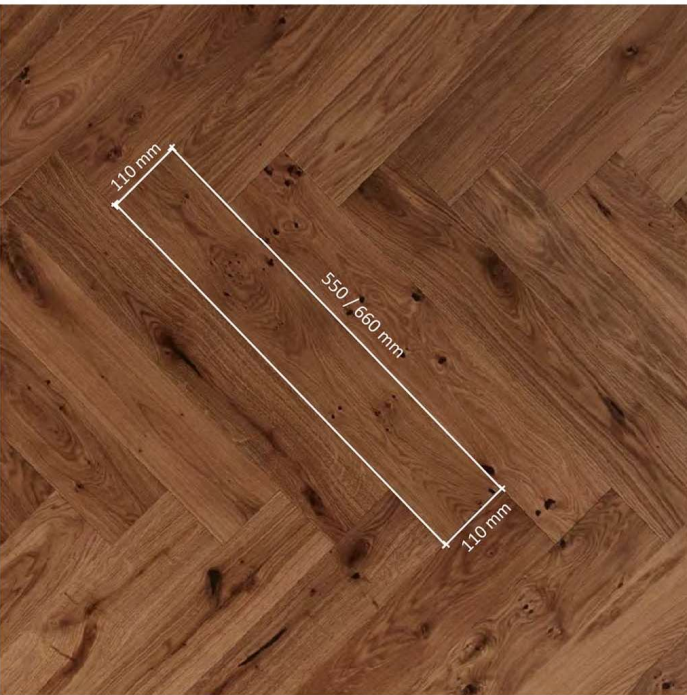
80 x 480/560 mm

110 x 550 mm

110 x 660 mm

150 x 900 mm

185 x 925 mm







DESIGN FLOOR **KOLMIO -  
DIAMOND PATTERN**

**Measures**

thickness: 14,5 mm

width: 150 mm







# HONG KONG JOB REFERENCE



Oak Vintage  
PYHÄ sanded, hard wax oiled



Park View Court.  
Central And Western,  
Hong Kong





Timberwise  
wooden floors

Robinson Road,  
Mid Levels West,  
Western District,  
Hong Kong

# DIMENSIONS OF THE TIMBERWISE WOODEN FLOORS

- Board widths:**
- Products 185 mm, 230 and 270mm.
  - 270-mm products only available with a traditional tongue and groove

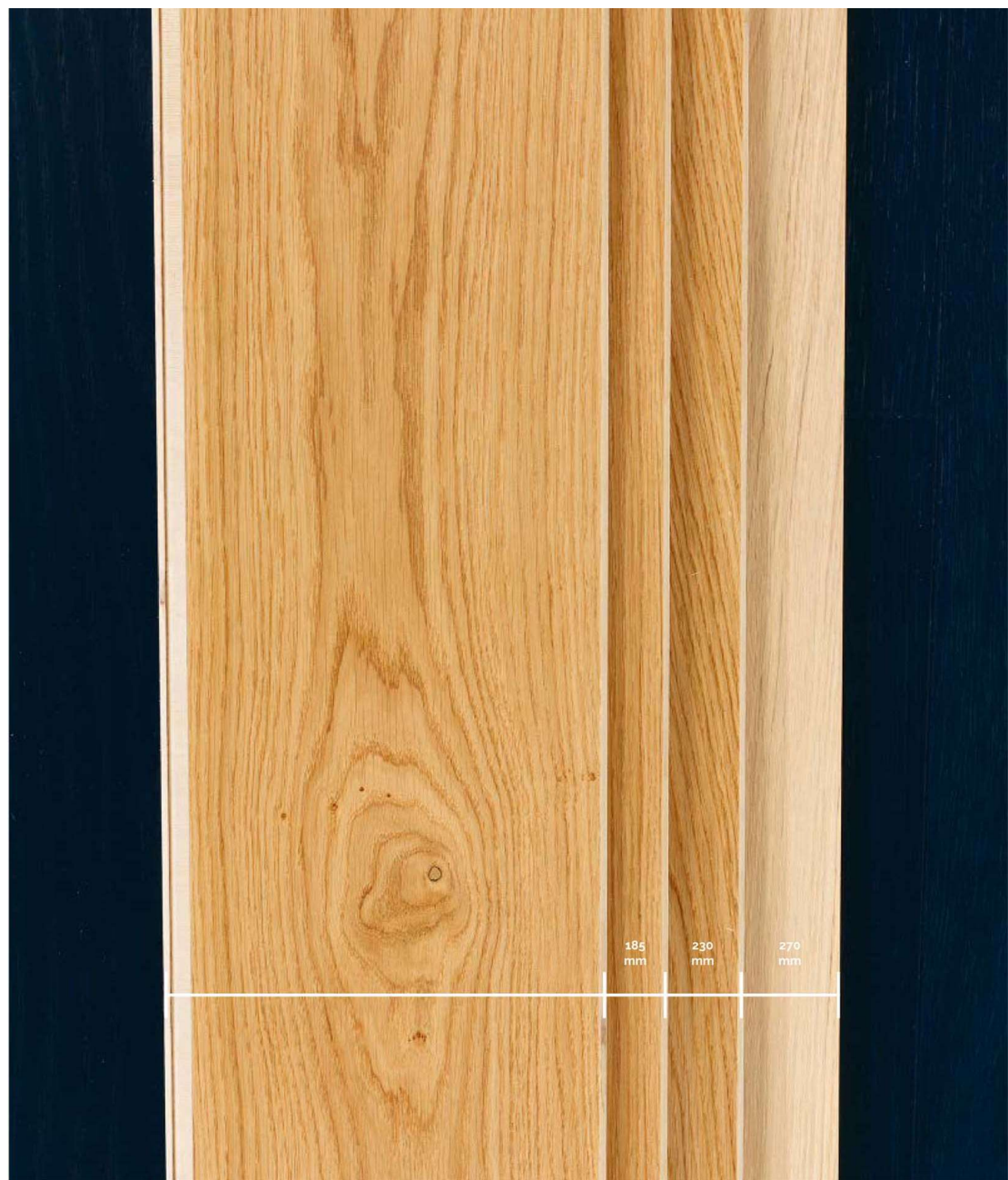
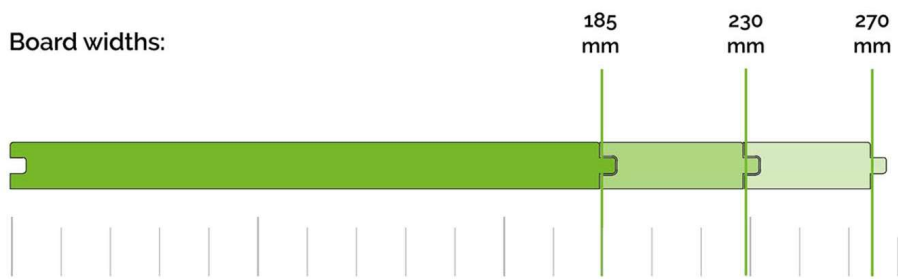
- Board thickness:**
- Thickness 14.5 mm
  - Oak and ash, surface layer thickness 3.5 mm
  - Larch, surface layer thickness 4.5 mm
  - Available special thickness 6.0 mm

- Board lengths:**
- 2.180 mm oak and ash
  - 2.500 mm larch
  - Allowed lengths are 2.180, 2.080, 2.000, and 1.818 mm
  - One package always contains boards of identical lengths – no mixed lengths

- Board bevels:**
- 0.7 mm micro bevels on the long side
  - 0.5 mm at the ends
  - The micro bevels highlight the board's single plank look – they do not collect dirt and are easy to maintain!

- Design wooden floors, dimensions (width x length):**
- 150 x 750 mm
  - 158 x 790 mm
  - 185 x 925 mm
  - 230 x 920 mm

# DIFFERENT WIDTH OPTIONS



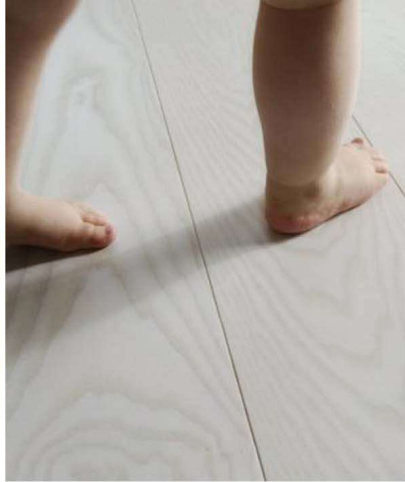




Chi Fu Fa Yuen.  
Pokfulam,  
Hong Kong



Polar



Snow White



Beach House White



White matte lacquered



Cream



Arctic



Nordic



Sky White



Natural



Ruka





Suomu



Glittertind



Husky



Lofoten



Oak Old Vintage 185 mm



Silver



Bole



Ylläs



Titan



Antique





Cognac



Seaclam



Wenge



Choco



Walnut



Blueberry



Coal



Eben



Pink



Sunshine Yellow





Timberwise  
wooden floors

Robinson Road,  
Mid Levels West,  
Western District,  
Hong Kong



Clovelly Court,  
12 May Road,  
Mid Levels Central,  
Hong Kong





Timberwise  
wooden floors

Braemar Hill,  
15-43  
Braemar Hill Road,  
Hong Kong



Timberwise  
wooden floors

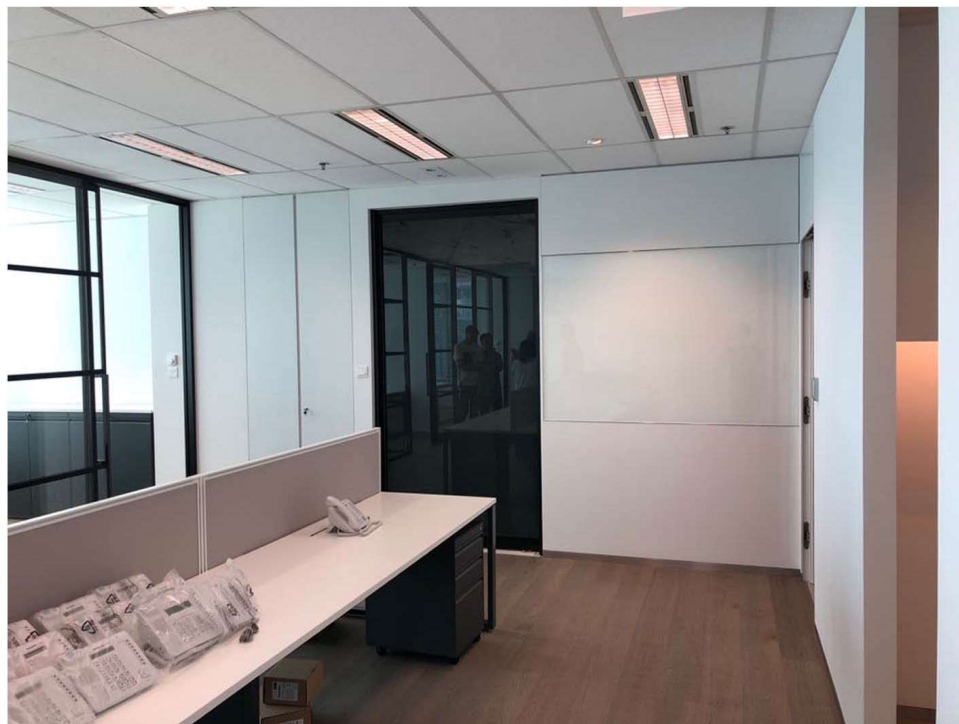
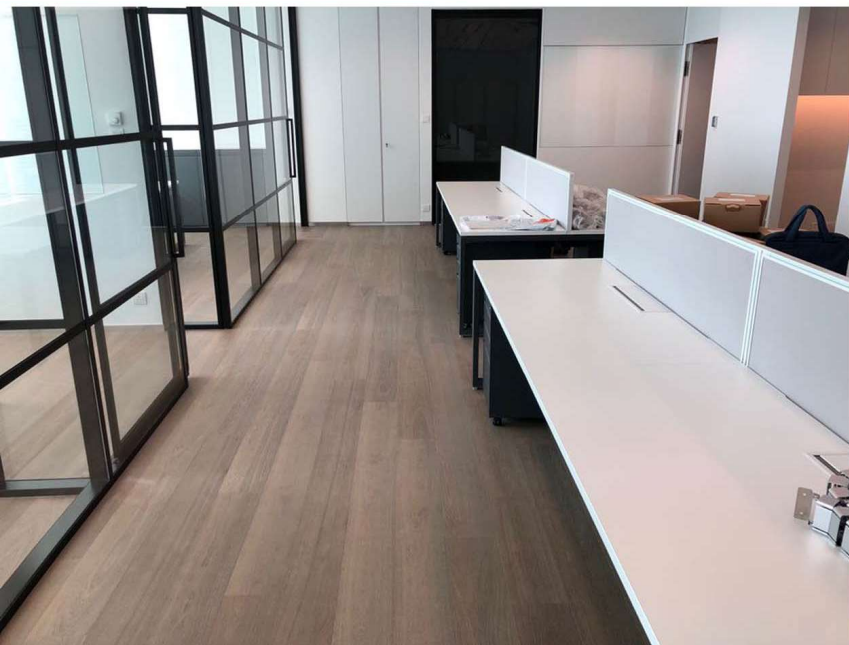
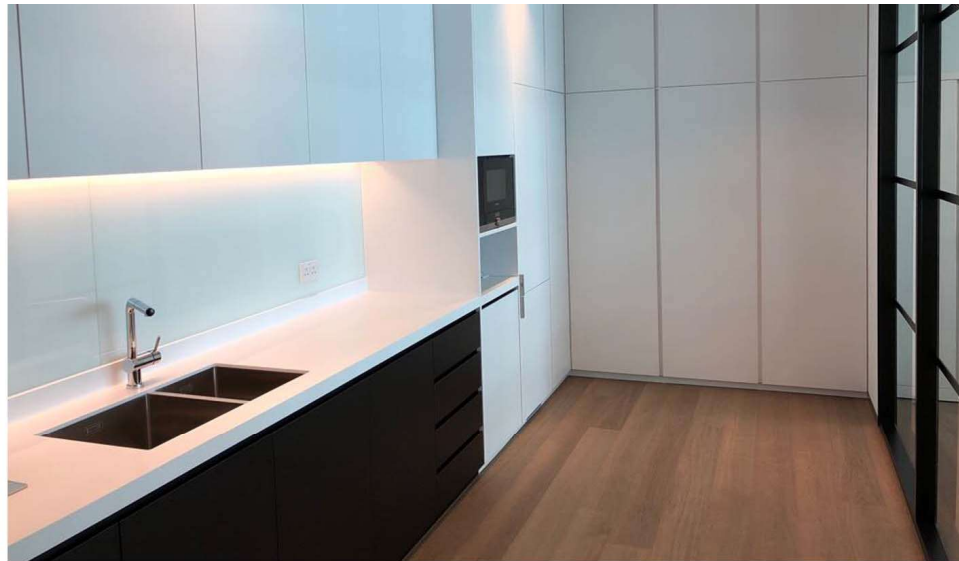
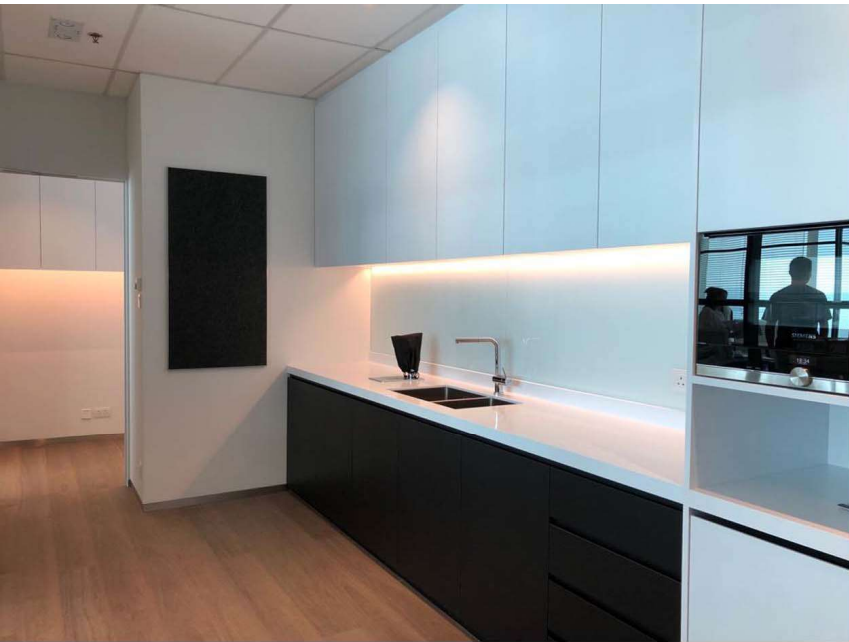
Grosvenor House,  
Mid-Levels Central,  
Hong Kong





Timberwise  
wooden floors

Citic Tower,  
Admiralty,  
Hong Kong



Timberwise  
wooden floors

Office,  
Hong Kong





# SURFACE TREATMENTS

## TREATMENTS

### BRUSHED

The Timberwise wooden floors are brushed with special nylon brushes, that bring the grain pattern to the surface, making it wear-resistant and pleasant for the feet. The brushed surface is an excellent choice for families with pets and children, since scratch marks and wear do not show as easily on brushed surfaces as they do on sanded surfaces.

### SANDED

Sanding is a traditional treatment that accentuates the wood's natural appearance and hardness. The benefits of the sanded surface are its evenness and smoothness, but when treated with wax oil or natural oil, it also wears and scratches more easily. That's why we recommend the sanded surface for less-used rooms.

## SURFACE TREATMENTS

### LACQUERED

The silky lacquer treatment gives the floor more wear resistance than wax oil, so it is a particularly good choice for heavily used spaces, such as hallways, foyers, and kitchens. Our selection includes colour tones that are available both as matte lacquered and wax oiled. This allows combining floors with different wear resistance properties into a uniform, even-coloured whole.

### WAX OILED

Flooring treated with a vegetable-based oil is ready-to-install directly from the package. The UV-hardened surface is also ecological, breathable, and dirt and moisture resistant. In addition, it is easy to clean, maintain and repair. Since the surface is satin or matte-finished, it is not slippery. This makes the wax oiled surface particularly child and pet friendly.

# EASY AND CAREFREE MAINTENANCE

The UV-hardened Timberwise wooden floors are the easiest to maintain on the market.

# DURABILITY AND EASE OF MAINTENANCE YEAR AFTER YEAR

Maintaining Timberwise wooden floors is easy. The lacquers and wax oils we use are hardened with UV light during the production process, which makes the wood significantly more durable and easier to maintain than traditional oiled floors.



# HOW TO MAINTAIN YOUR TIMBERWISE FLOOR

- Maintain an appropriate indoor humidity level (RH 30–65%) and the recommended temperature (+18– 24°C) during all seasons. In humid seasons (summer), adequate ventilation is required, and in dry seasons (winter), adequate air humidity must be ensured by using a humidifier.
- Prevent dust, sand and gravel from being carried along onto the parquet by placing doormats on both sides of the front door.
- Place a plastic mat under the shoes in the hallway to protect the parquet from water damage.
- Vacuum-clean and mop the floor regularly to prevent dirt from sticking to the floor surface.
- Use only a small amount of water when cleaning – the floor surface must be dry within a minute of mopping.
- Avoid using strong detergents, since they can dissolve the protective wax oil or lacquer layer on the floor.
- Avoid using excess amounts of detergent in order to prevent a dirt-collecting detergent layer from accumulating on the surface of the floor.
- Remove stains immediately.
- To prevent scratch marks on the floor, attach felt pads to the ends of furniture legs, and, in the case of an office chair with wheels, cover the floor underneath it.

MORE DETAILED MAINTENANCE INSTRUCTIONS CAN BE READ AT: [www.timberwiseparquet.com](http://www.timberwiseparquet.com)



# THE NEW FORMS OF WOOD

Timberwise Design Projects is a tribute to Finnish design and wood processing. Its wooden floors, wall elements and utility items take a bold break from the traditions of wooden floor design and use. The project's first product families are the K2 and Twise. Finnish wooden floor manufacturer Timberwise is joined by top designers Harri Koskinen and Ville Kokkonen to design and produce this ground-breaking product range.

[www.timberwisedesignprojects.fi](http://www.timberwisedesignprojects.fi)



facebook  
Karljan Wood Flooring



instagram  
karljanwood\_flooring



for more information

website: <http://www.karljanintl.com/> e-mail: [sales@Karljanintl.com](mailto:sales@Karljanintl.com)

tel : 852-2388 3938 fax : 852-2374 3939



*Karljan*  
AN UNDERCOVERED WORLD OF LUXURY

17/F, Yue On Commercial Building, 385-387 Lockhart Road, Wanchai, Hong Kong